

SCOUT API

→ Use Scout's open API to create integrations with existing or future systems

→ Integrate with suppliers' platforms and internally with business data sources

→ Achieve secure connections that help expedite sourcing processes

WHY SCOUT API?

Disjointed sources of data result in low confidence in data quality and operational challenges for the enterprise. By integrating supplier and internal data sources with Scout's platform via its API, Procurement can ensure data consistency while streamlining business processes.

Scout's REST API easily connects to an enterprise application of choice while at the same time ensuring data security. Scout's API easily integrates to your ERP(s), invoicing, payments, travel, expenses, and any other applications the business uses to manage enterprise operations.

SCOUT API HELPS YOU:

Advance your digitization strategy across the enterprise

Gain full visibility of source-to-pay processes

Increase collaboration and transparency across procurement, suppliers, and the business

Focus more on supplier relationships and less on juggling tools

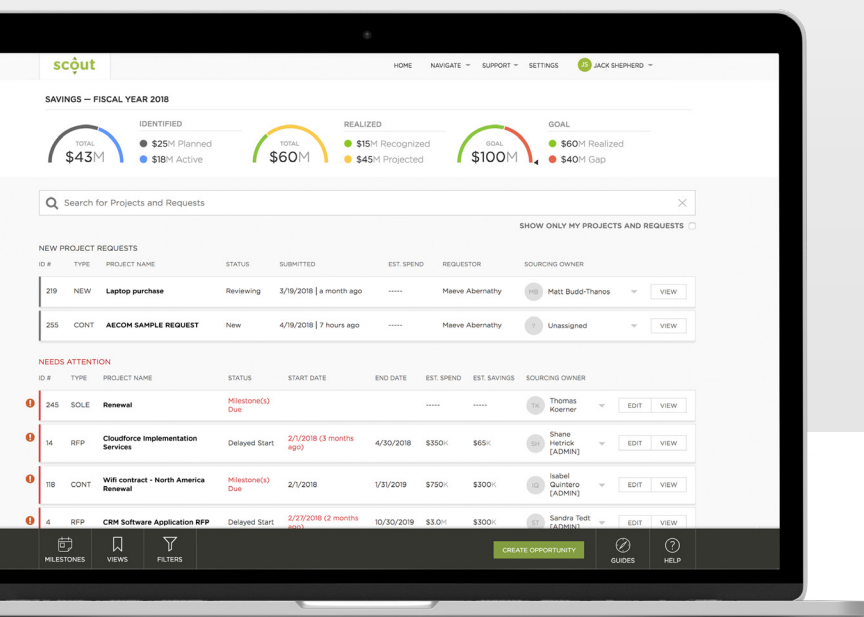
Leverage built-in integrations for Workday, DocuSign, Tableau, and Power BI

Ensure data accuracy across vendor master and connected applications

Reduce risk of human error in data migration

Simplify workloads of IT and sourcing

Maintain security for your technology ecosystem



CORE CAPABILITIES:

Built-In Connectors	ERP Integrations	TPRM Alerts	User Permissions
Easily connect to DocuSign, Tableau, Power BI, and Workday with Scout's existing connectors	Integrate with any ERP or vendor master to maintain data consistency across the enterprise	Stay up to date through push alerts from your third party risk management system to Scout supplier profiles	Use API tokens to automatically match supplier API permissions with supplier directory permissions
Customer Third-Party Connectors	Strong Security	Business Empowerment	Scalable Sourcing
Use the Scout API platform to build custom integrations for supplier, project, and contract data	Ensure you have the right security protocols in place for your data with Scout's API	Integrate business applications to empower stakeholders and increase productivity	Set Sourcing up for success with a future-proof API that's easy to scale

See it in Action: API

<https://www.scoutrfp.com/schedule-scout-demo/>

[scoutrfp.com](https://www.scoutrfp.com) | **Get a Demo Today: 1.800.235.4492**

Scout is the sourcing and supplier engagement platform trusted by procurement teams to streamline their process, manage a unified pipeline of projects, and collaborate with stakeholders and suppliers. Scout's powerful platform makes enterprise commerce faster and more transparent, reduces risk, and drives profitability, giving CPOs the tools they need to transform the enterprise. Global brands trust Scout to provide greater visibility across stakeholders and suppliers, measure effectiveness, and make procurement teams crazy successful. Headquartered in San Francisco, California, Scout is funded by Scale Venture Partners, Menlo Ventures, NewView Capital, Salesforce Ventures, Workday Ventures and GV. Read more on the [Scout Blog](#) or follow:

